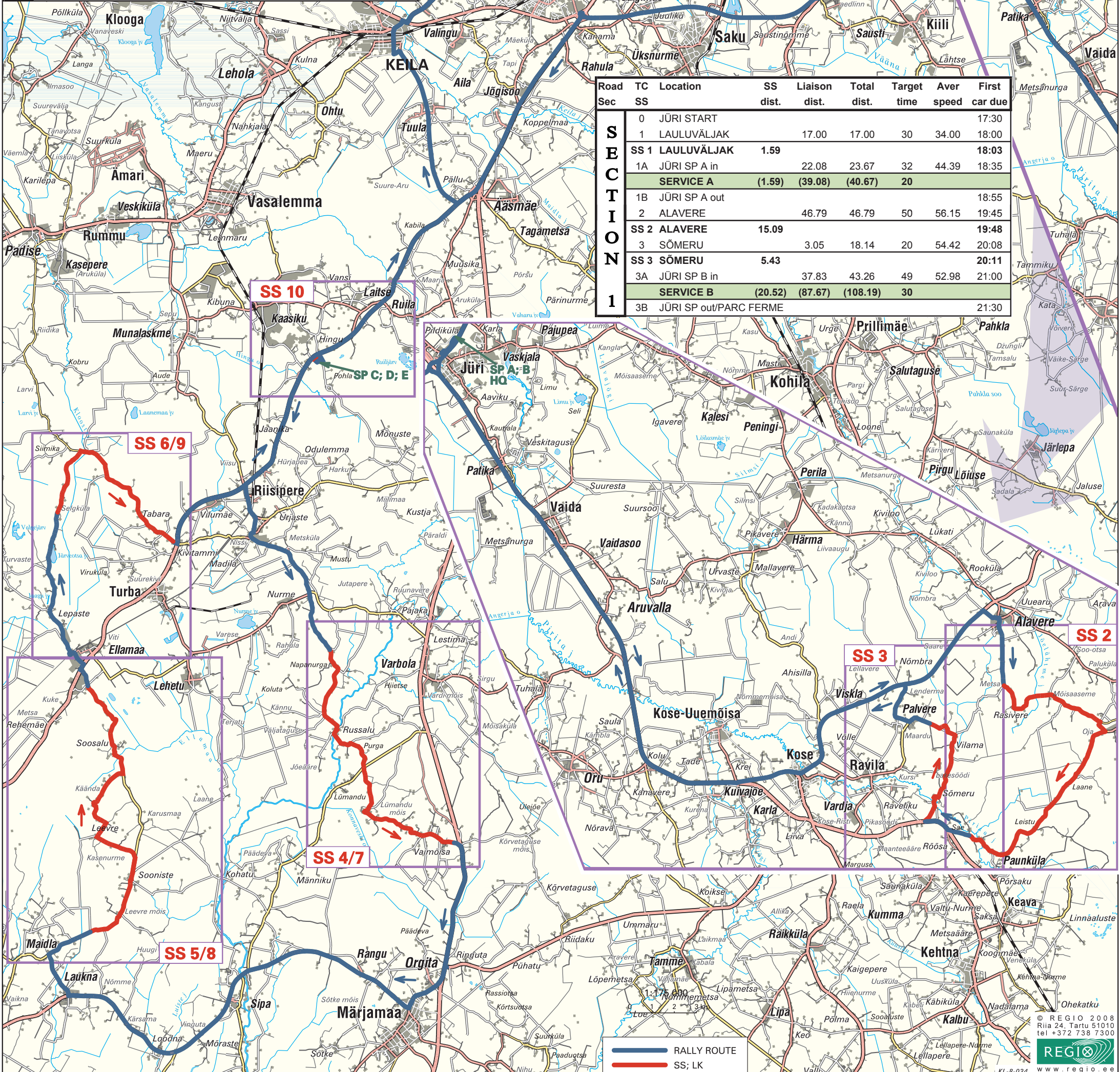


Road Sec	TC SS	Location	SS dist.	Liaison dist.	Total dist.	Target time	Aver speed	First car due
SECTION 2	3C	PARC FERME out						7:00
	3D	Laitse SP C in	42.50		42.50	45	56.67	7:45
	SERVICE C			(42.50)	(42.50)	15		
	3E	Laitse SP C out						8:00
	4	NURME 1	17.11	17.11	20	51.33	8:20	
	SS 4	NURME 1	13.36				8:23	
	5	SOONISTE 1	32.28	45.64	50	54.77	9:13	
	SS 5	SOONISTE 1	15.05				9:16	
	6	LEPASTE 1	8.84	23.89	30	47.78	9:46	
	SS 6	LEPASTE 1	9.20				9:49	
SECTION 3	6A	Laitse SP D in	12.93	22.13	26	51.07	10:15	
	SERVICE D			(37.61)	(71.16)	(108.77)	30	
	6B	SP D out / Regroup in					10:45	
	6C	Regrouping out	0.12	0.12	15		11:00	
	6C	Regrouping out					11:00	
	7	NURME 2	16.99	16.99	20	50.97	11:20	
	SS 7	NURME 2	13.36				11:23	
	8	SOONISTE 2	32.28	45.64	50	54.77	12:13	
	SS 8	SOONISTE 2	15.05				12:16	
	9	LEPASTE 2	8.84	23.89	30	47.78	12:46	
SS 9	LEPASTE 2	9.20				12:49		
SECTION 1	9A	Laitse SP E in	12.93	22.13	26	51.07	13:15	
	SERVICE E			(37.61)	(71.04)	(108.65)	45	
	9B	Laitse SP E out					14:00	
	SS10	Laitse RallyPark	2.30				14:45	
	10	Laitse RallyPark	0.63	2.93	45		14:45	
	11	JÄÄHALL	44.34	44.34	55	48.37	15:40	
	12	HOLDING AREA out	0.10	0.10	5		15:45	
		PODIUM			15		16:00	
		PARC FERME			5		16:05	

2008
RAHVUSVAHELINE
KOGER - TALLINNA RALLY
 & PARTNERID



Road Sec	TC SS	Location	SS dist.	Liaison dist.	Total dist.	Target time	Aver speed	First car due
SECTION 1	0	JÜRI START						17:30
	1	LAULUVÄLJAK	17.00	17.00	30	34.00	18:00	
	SS 1	LAULUVÄLJAK	1.59				18:03	
	1A	JÜRI SP A in	22.08	23.67	32	44.39	18:35	
	SERVICE A			(1.59)	(39.08)	(40.67)	20	
	1B	JÜRI SP A out					18:55	
	2	ALAVERE	46.79	46.79	50	56.15	19:45	
	SS 2	ALAVERE	15.09				19:48	
	3	SÖMERU	3.05	18.14	20	54.42	20:08	
	SS 3	SÖMERU	5.43				20:11	
SECTION 1	3A	JÜRI SP B in	37.83	43.26	49	52.98	21:00	
	SERVICE B			(20.52)	(87.67)	(108.19)	30	
	3B	JÜRI SP out/PARC FERME					21:30	