



**RALLY  
ESTONIA  
13-15 JULY 2018**

Sponsored by



# SUPPLEMENTARY REGULATIONS

 [RALLYESTONIA.COM](http://RALLYESTONIA.COM)

NIMISPONSOR / NAME SPONSOR



# SHELL HELIX RALLY ESTONIA 13-15 JULY 2018

## SUPPLEMENTARY REGULATIONS

### INDEX

<b>1 INTRODUCTION.....</b>	<b>3</b>
<b>2 ORGANISATION.....</b>	<b>3</b>
<b>3 PROGRAMME .....</b>	<b>6</b>
<b>4 ENTRIES .....</b>	<b>8</b>
<b>5 INSURANCE.....</b>	<b>11</b>
<b>6 ADVERTISING &amp; IDENTIFICATION .....</b>	<b>12</b>
<b>7 TYRES.....</b>	<b>13</b>
<b>8 FUEL .....</b>	<b>14</b>
<b>9 RECONNAISSANCE .....</b>	<b>14</b>
<b>10 ADMINISTRATIVE CHECKS.....</b>	<b>16</b>
<b>11 SCRUTINEERING, MARKING AND SEALING.....</b>	<b>17</b>
<b>12 OTHER PROCEDURES.....</b>	<b>19</b>
<b>13 IDENTIFICATION OF OFFICIALS.....</b>	<b>22</b>
<b>14 PRIZES .....</b>	<b>23</b>
<b>15 FINAL CHECKS AND PROTESTS.....</b>	<b>23</b>
<b>APPENDIX 1 – ITINERARY.....</b>	<b>24</b>
<b>APPENDIX 2 – RECONNAISSANCE SCHEDULE.....</b>	<b>28</b>
<b>APPENDIX 3 – COMPETITORS’ RELATIONS OFFICERS.....</b>	<b>29</b>
<b>APPENDIX 4 – COMPETITION NUMBERS AND ADVERTISING.....</b>	<b>30</b>
<b>APPENDIX 5 – CHAPTER III DRIVERS’ EQUIPMENT OF APPENDIX L 2018.....</b>	<b>32</b>
<b>APPENDIX 6 – RESTRICTED ROADS.....</b>	<b>33</b>
<b>APPENDIX 7 – FUEL DECLARATION FORM.....</b>	<b>34</b>

## 1. INTRODUCTION

### 1.1 GENERAL

The rally will be run in compliance with the 2018 FIA International Sporting Code (FIA ISC) and its appendices, the 2018 FIA Regional Rally Sporting Regulations (FIA RRSR and these Supplementary Regulations (SR) and its appendices.

The classes EMV1, EMV2, EMV3, EMV4, EMV5, EMV6, EMV7, EMV8, EMV9, EMV10, EMV11 will have to fulfil in addition the 2018 Estonian Open Rally Championship Regulations and classes LRČ ABS, LRČ 1, LRČ 2, LRČ 3, LRČ 4, LRČ 5, LRČ 6, LRČ Junior, LRČ Teams will have to fulfil in addition the 2018 Latvian Rally Championship Regulations. The regulations that apply only to the abovementioned classes are marked in green colour in these SR.

Any modifications, amendments and/or changes to these Supplementary Regulations will be announced only by numbered and dated bulletins (issued by the Organiser, the Stewards or the Clerk of the Course).

The Supplementary Regulations are published in English and Estonian. In case of any dispute about interpretation of these regulations the English text will be binding.

Additional information will be published in Rally Guide 1, to be issued on Friday 18 May 2018 and Rally Guide 2, to be issued on Monday 2 July 2018. These Guides have no regulatory power and are only to be considered informational.

The 2018 FIA Regional Rally Championship Sporting Regulations is published on website [www.fia.com](http://www.fia.com), the 2018 Estonian Open Rally Championship Regulations on [www.autosport.ee](http://www.autosport.ee) and the 2018 Latvian Rally Championship Regulations on [www.laf.lv](http://www.laf.lv) , [www.autorally.lv](http://www.autorally.lv).

**Anything that is not expressly authorised by those regulations is forbidden.**

### 1.2 ROAD SURFACE

Gravel. Tartu City Stage (1.87 km) and Elva City Stage (1.66 km) are on tarmac.

### 1.3 DISTANCES

Total Special Stage Distance	146.04 km (21.6%)
Total Rally Distance	676.18 km
Number of Special Stages	16 (9 different stages)
Number of Sections	8
Number of Legs	2
Power Stage (Estonian Rally Championship)	SS 16
Power Stage (Latvian Rally Championship)	SS 10

## 2. ORGANISATION

### 2.1 TITLES FOR WHICH THE RALLY COUNTS:

1<sup>st</sup> round of FIA Baltic Rally Trophy as a regional part of FIA European Rally Trophy  
 5<sup>th</sup> round of Estonian Rally Championship 2018 (3<sup>rd</sup> round for class EMV10 trucks)  
 4<sup>th</sup> round of Latvian Rally Championship 2018

### 2.2 VISA NUMBER

FIA: 14ERT/090518 issued on: 9 May 2018

ASN: 52/R issued on: 9 May 2018

## 2.3 ORGANISER'S NAME / PERMANENT SECRETARIAT, ADDRESS AND CONTACT DETAILS

Estonian Autosport Events MTU

Address: Sinilille tee 1, Peetri alevik, Rae vald, 75312, Estonia

Tel: +372 56 966 698

E-mail: [info@rallyestonia.ee](mailto:info@rallyestonia.ee)

Web: [www.rallyestonia.com](http://www.rallyestonia.com)

Open on working days at 9:00-17:00

## 2.4 ORGANISING COMMITTEE

Chairman	Mr.Urmo Aava
Member	Mr.Silver Kütt
Member	Mr.Tarmo Hõbe
Member	Ms.Kristi Jeenas

## 2.5 STEWARDS OF THE MEETING

Chairman (appointed by the FIA)	Mr.Arnas Paliukėnas	(LTU)
FIA Steward	Mr.Reinis Pozņaks	(LVA)
ASN Steward	Mr.Juhan Mänd	(EST)
Secretary to the Stewards	Ms.Kristi Jeenas	(EST)

## 2.6 OBSERVERS AND DELEGATES

FIA Observer	Mr.Reinis Pozņaks	(LVA)
ASN Observer	Mr.Avo Kristov	(EST)
LAF Observer	Mr.Reinis Pozņaks	(LVA)
LAF Technical Delegate	Mr.Gints Freimanis	(LVA)

## 2.7 SENIOR OFFICIALS

Clerk of the Course	Mr.Silver Kütt	(EST)
Deputy Clerk of the Course/Chief Safety Officer	Mr.Priit Priimägi	(EST)
Deputy Clerk of the Course	Mr.Janis Krastins	(LVA)
Deputy Clerk of the Course	Mr.Urmas Roosimaa	(EST)
Deputy Clerk of the Course	Mr.Janno Hert	(EST)
Route manager	Mr.Hillar Roose	(EST)
Rally HQ Manager	Ms.Karmen Vesselov	(EST)
Secretary of the Rally	Ms.Karin Julge	(EST)
Chief Rescue Officer	Mr.Mart Haljaste	(EST)
Chief Medical Officer	Mr.Andras Laugamets	(EST)
Chief Scrutineer	Mr.Taavi Luik	(EST)
Assistant to Chief Scrutineer	Mr.Karmo Uusmaa	(EST)
Press Officer	Mr.Margus Kiiver	(EST)
Media Centre Manager	Mr.Rauno Paltser	(EST)
Chief of Results System	Mr.Andris Rigerts	(LVA)
Chief Timekeeper	Mr.Itars Silinš	(LVA)
Competitors' Relations Officer	Ms.Inger Tuur	(EST)
Competitors' Relations Officer	Mr.Simo Pärnänen	(FIN)
Competitors' Relations Officer	Mr.Andris Malnieks	(LVA)
Service Park Manager	Mr.Kalle Kaart	(EST)
GPS System Officer	Mr.Maris Simson	(LTU)

## 2.8 RALLY HQ LOCATION AND CONTACT DETAILS

Rally HQ location from Wednesday 11 July until Sunday 15 July

Tehvandi Sport Center

Address: Nüpli küla, 67408 Otepää, Estonia

Phone: +372 73 55 101

### Rally HQ opening hours:

Wednesday 11 July	17:00 – 20:00
Thursday 12 July	8:00 – 20:00
Friday 13 July	7:00 – 22:00
Saturday 14 July	6:30 – 24:00
Sunday 15 July	7:00 – 20:00

## 2.9 OFFICIAL NOTICE BOARD LOCATION

The ONB is located in Rally HQ, Tehvandi Sport Center, Otepää

Virtual Notice Board (VNB) is online at [www.rallyestonia.com](http://www.rallyestonia.com)

## 2.10 LOCATION OF PARC FERMÉ

PF after Leg 1 and Final Parc Fermé

Date: 14-15 July

Location: Corner of Vabaduse Str and Gildi Str, Tartu

## 2.11 LOCATION OF SERVICE PARK AND TRAILER PARK

Date: 12-15 July

Location: Tehvandi Sport Center, Otepää

### Opening hours:

Thursday 12 July	7:00 – 23:00
Friday 13 July	7:00 – 23:00
Saturday 14 July	7:00 – 23:00
Sunday 15 July	7:00 – 19:00

## 2.12 LOCATION OF MEDIA CENTRE

Location: Rally HQ, Tehvandi Sport Center, Otepää

Time:	Thursday 12 July	17:00 – 20:00
	Friday 13 July	8:00 – 22:00
	Saturday 14 July	7:00 – 21:00
	Sunday 15 July	8:00 – 18:00

## 2.13 MAIN GPS COORDINATES

Rally HQ and Media Centre	58°03'271" 26°30'153"
Ceremonial Start and Podium Finish	58°22'806" 26°43'527"
Pre-Start Scrutineering	58°02'944" 26°30'933"
Final Scrutineering	58°02'944" 26°30'933"
Parc Fermé	58°22'906" 26°43'421"
Service Park	58°03'271" 26°30'153"

### 3. PROGRAMME

#### 3.1 PROGRAMME BEFORE THE RALLY WEEK

<b>Monday 14 May</b>		
	Publication of Supplementary Regulations, entries open	www.rallyestonia.com
<b>Friday 18 May</b>		
	Publication of Rally Guide 1	www.rallyestonia.com
<b>Monday 28 May</b>		
	Media accreditation open	www.rallyestonia.com
<b>Monday 25 June</b>		
18:00	Closing date for helicopter registration	raiko@rallyestonia.ee
<b>Friday 29 June</b>		
18:00	Closing date for entries	www.rallyestonia.com
<b>Friday 29 June</b>		
18:00	Closing date for Media accreditation	www.rallyestonia.com
<b>Monday 2 July</b>		
	Publication of Rally Guide 2	www.rallyestonia.com
<b>Tuesday 3 July</b>		
18:00	Closing date for order of extra services in Service Park, additional space, consecutive Service areas	service@rallyestonia.ee
<b>Tuesday 3 July</b>		
18:00	Closing date for Shakedown registration and payment of fee	entry@rallyestonia.ee
<b>Monday 9 July</b>		
12:00	Publication of Entry List	www.rallyestonia.com
<b>All the above information published on www.rallyestonia.com</b>		

#### 3.2 PROGRAMME DURING THE RALLY WEEK

<b>Wednesday 11 July</b>		
17:00 – 20:00	Rally HQ open	Rally HQ, Otepää
17:00 – 20:00	Registration for Reconnaissance Administrative Checks Collection of Road Book, route map and other documents Collection of Reconnaissance Tracker / Rally Safety Tracker Checking of Reconnaissance cars	Rally HQ, Otepää
<b>Thursday 12 July</b>		
7:00 – 23:00	Service Park open Trailer Park open	Tehvandi Sport Center
8:00 – 20:00	Rally HQ open	Rally HQ, Otepää
8:00 – 12:00	Registration for Reconnaissance Administrative Checks Collection of Road Book, route map and other documents Collection of Reconnaissance Tracker / Rally Safety Tracker Checking of Reconnaissance cars	Rally HQ, Otepää
10:00 – 21:00	Reconnaissance	See Appendix 2
12:00 – 20:00	Scrutineering - sealing and marking of components	Tehvandi Ski-Jumping Hill, Otepää
17:00 – 20:00	Media Centre and Media Accreditation open	Media Centre in Rally HQ
20:00	Safety Cars briefing	Rally HQ, Otepää

<b>Friday 13 July</b>		
7:00 – 22:00	Rally HQ open	Rally HQ, Otepää
7:00 – 23:00	Service Park open Trailer Park open	Tehvandi Sport Center
8:00 – 10:00	Scrutineering for cars assigned to do repairs	Tehvandi Ski-Jumping Hill, Otepää
8:00 – 11:00	Reconnaissance	See Appendix 2
8:00 – 22:00	Media Centre and Media Accreditation open	Media Centre in Rally HQ
9:00	Helicopter pilots briefing	Rally HQ, Otepää
At any time between 9:00 – 17:00	First aid training for crews (duration approximately 15 minutes)	In front of Rally HQ, Otepää
10:00 – 16:00	Shakedown P1 drivers (optional)	Near Otepää
12:00 – 16:00	Shakedown all other drivers (optional)	Near Otepää
16:00	Publication of Start List for Ceremonial Start	Official Notice board & Virtual Notice Board
18:00	First Stewards' Meeting	Stewards' Meeting Room in Rally HQ, Otepää
19:00	Publication of Start List for Leg 1 Section 1	Official Notice board & Virtual Notice Board
20:00	Pre-event Press Conference	Podium at Town Hall Square, Tartu
20:15	Autograph Signing Session	Podium at Town Hall Square, Tartu
21:00	Ceremonial Start	Podium at Town Hall Square, Tartu
21:30	Overnight parking arranged by Organiser (optional)	Corner of Vabaduse Str and Gildi Str, Tartu
<b>Saturday 14 July</b>		
6:30 – 24:00	Rally HQ open	Rally HQ, Otepää
7:00 – 23:00	Service Park open Trailer Park open	Tehvandi Sport Center
7:00	Start Leg 1 Section 1 / TC 0	Corner of Vabaduse Str and Gildi Str, Tartu
7:00 – 21:00	Media Centre open	Media Centre in Rally HQ
19:42	Finish Leg 1 / TC 11A	Parc Fermé, Tartu
23:00	Publication of Start List for Leg 2	Official Notice board, VNB
<b>Sunday 15 July</b>		
7:00	Scrutineering of restarting cars	Parc Fermé, Tartu
7:00 – 19:00	Service Park open Trailer Park open	Tehvandi Sport Center
7:00 – 20:00	Rally HQ open	Rally HQ, Otepää
8:00 – 18:00	Media Centre open	Media Centre in Rally HQ
8:00	Start of Leg 2 / TC 11B	Parc Fermé, Tartu
16:00	Podium Ceremony and Prize-Giving	Podium at Town Hall Square, Tartu
16:15	Post-rally Press Conference	Podium at Town Hall Square, Tartu
16:45	Parc Fermé after finish	Corner of Vabaduse Str and Gildi Str, Tartu
17:45	Final Scrutineering	Tehvandi Ski-Jumping Hill, Otepää
19:00	Publication of Provisional Classification	Official Notice board, VNB
19:30	Publication of Final Classification	Official Notice board, VNB

## 4. ENTRIES

### 4.1 CLOSING DATE FOR ENTRIES

Friday 29 June at 18:00.

### 4.2 ENTRY PROCEDURE

Competitors enter the event using the on-line entry system which can be accessed via [www.rallyestonia.com](http://www.rallyestonia.com).

Details concerning the co-drivers can be specified at the administrative check of the crew.

By submitting an entry a participant allows to publish the information mentioned in this entry application in the media. The entry form must be signed **by both drivers** at the Administrative Checks and by signing the crew agrees to let the Organiser use their competition photos and videos.

#### 4.2.1 Acceptance of Entry Form

The entry application will only be accepted if duly completed and accompanied by the bank transfer of the total amount of the entry fee to the Organiser's bank account. The competitors whose entry fee has not been received will not be added to the list of registered drivers.

### 4.3 NUMBER OF ENTRIES ACCEPTED AND CLASSES

**4.3.1** The maximum number of entries accepted will be 140. If more than 140 entries are received, the Organiser reserves the sole right to decide which entries will be accepted.

#### 4.3.2 Cars eligible to enter the event

**4.3.2.1** For participation in FIA Baltic Rally Trophy (part of FIA ERT) cars complying with FIA RRSR Art.4. are eligible.

**4.3.2.2** For participation in Estonian Rally Championship cars complying with Art.2. of the 2018 Estonian Open Rally Championship Regulations are eligible.

**4.3.2.3** For participation only in Latvian Rally Championship cars complying with Articles 1.5. and 1.6.1 of the Latvian Rally Championship Regulations 2018 are eligible. **Latvian Rally Championship will be run as Leg 1 of the rally.**

All cars eligible above are competing also in overall classification of Shell Helix Rally Estonia, **except cars entered only in Latvian Rally Championship (Art.4.3.2.3 of SR).**

#### 4.3.3 Classes of cars

##### 4.3.3.1 Baltic Rally Trophy classes (part of FIA ERT)

Note: Points for the FIA ERT regional classification will be awarded only for crews with internationally homologated cars.

Classes	Groups
RC2	S2000-Rally: 1.6T engine with a 28mm restrictor
	S2000-Rally: 2.0 Atmospheric
	Group R5 (VR5)
	Group NR4 over 2000cc (current N4)
RGT	RGT cars
RC3	Group A over 1600cc and up to 2000cc
	Super 1600
	R2 (atmo over 1600cc and up to 2000cc – VR2C and turbo over 1067cc and up to 1333cc – VR2C)
	R3 (atmo / over 1600cc and up to 2000cc – VR3C and turbo over 1067cc and up to 1333cc – VR3C)
	R3 (turbo / up to 1620cc / nominal – VR3T)
	R3 (diesel / up to 2000cc / nominal – VR3D)
RC4	Group A up to 1600cc
	R2 (atmo over 1390cc and up to 1600cc – VR2B and turbo over 927cc and up to 1067cc – VR2B)
	Kit-car up to 1600cc
	Group N over 1600cc and up to 2000cc



RC5	Group N up to 1600cc
	R1 (atmo up to 1600cc - VR1A/VR1B and turbo up to 1067cc - VR1A/VR1B)

#### 4.3.3.2. Estonian Rally Championship classes

Classes	Groups
EMV1	4WD absolute class (all 4WD cars, incl. EMV3, WRC and prototypes)
EMV2	2WD absolute class (classes EMV5 – EMV10, and possible prototype cars)
EMV3	4WD N4, R5, S2000
EMV4	4WD E12
EMV5	2WD R3, A7, N3, E10/1 (first homologation after 2001)
EMV6	2WD A6, R2• (except Super 1600)
EMV7	2WD E11 over 2000ccm
EMV8	2WD E10/2 1600-2000ccm (first homologation before 2001)
EMV9	2WD E9 up to 1600ccm
EMV10	E13 trucks
EMV11	Team competition

#### 4.3.3.3. Latvian Rally Championship classes

Classes	Groups
LRČ ABS	Includes: <b>WRC; RRC; R5; R4; S2000; N4; N3; N2; N1; A8; A7; A6; A5; R3; R2; R1;</b> - according to the FIA Technical Regulations and approved by the interpretation of the LAF Technical Regulations; <b>PROTO-R</b> and <b>PROTO-L</b> ; <b>L13</b> (over 3000 cm <sup>3</sup> up to 4000 cm <sup>3</sup> ); <b>L12</b> (2500 cm <sup>3</sup> up to 3000 cm <sup>3</sup> ), <b>L11</b> (2000 cm <sup>3</sup> up to 2500 cm <sup>3</sup> ) – 4-wheel drive cars in accordance with LAF Technical Regulations; <b>L10</b> (over 1600 cm <sup>3</sup> up to 2000 cm <sup>3</sup> ); <b>L9</b> (over 1400 cm <sup>3</sup> up to 1600 cm <sup>3</sup> ), <b>L8</b> (over 1000 cm <sup>3</sup> up to 1400 cm <sup>3</sup> ) Baltic open B6 and B7 classes;
LRČ 1	<b>PROTO-L</b> ; <b>L13</b> - 4WD class in accordance with the LAF technical rules;
LRČ 2	<b>N4</b> class in accordance with FIA Technical Regulations; <b>N4-LV</b> class according to the LAF Technical Regulations facilitation, according to the national homologations <b>Baltic open "B6"</b> and <b>"B7"</b> drive cars in accordance with LAF Technical Regulations;
LRČ 3	<b>R2</b> class in accordance with FIA Technical Regulations; <b>R2 LV</b> class in accordance with reliefs of Technical regulations and National homologation;
LRČ 4	4WD classes: <b>L12; L11</b> in accordance with FIA Technical Regulations
LRČ 5	2WD classes: <b>A7; R3</b> in accordance with FIA Technical Regulations. 2WD classes: <b>L12; L11</b> in accordance with LAF Technical Regulations
LRČ 6	2WD classes: <b>N1, N2, N3, A6, A5, R1 (MS1)</b> in accordance with FIA Technical Regulations; <b>L10, L9, L8; PROTO-L</b> in accordance with LAF Technical Regulations
LRČ Junior	Drivers (in accordance with LAF Code), who are no older than 25 years (on 1st January, 2018) and compete with a 2WD car in compliance with A, N, R, L group and cylinder capacity does not exceed 2000cm <sup>3</sup> .
LRČ Teams	Team competition

#### 4.4 ENTRY FEES

Entry fee with the optional advertising proposed by the Organiser is as follows:

**Baltic Rally Trophy (ERT) and Estonian Rally Championship (total SS distance 146.04 km, trucks total SS distance 101.79 km):**

4WD	550 EUR + 20% VAT (660 EUR) / crew
2WD	450 EUR + 20% VAT (540 EUR) / crew
Trucks	300 EUR + 20% VAT (360 EUR) / crew

**Latvian Rally Championship (Leg 1 of the rally, total SS distance 90.37 km):**

LRČ ABS, LRČ1; LRČ2; LRČ3	500 EUR + 20% VAT (600 EUR) / crew
LRČ4; LRČ5; LRČ6	400 EUR + 20% VAT (480 EUR) / crew

**Latvian Rally championship participants who wish to drive the whole rally (Leg1 and Leg2), must pay the Baltic Rally Trophy fee only.**

Shakedown participation fee	150 EUR + 20% VAT (180 EUR) / crew
Participation in recce only	100 EUR + 20% VAT (120 EUR) / crew

**VAT is payable by all Competitors, except those Competitors from another EU member State who supply their VAT number with their entry.**

Competitors who wish to receive an invoice for the entry fee and fees for additional space and services in the Service Park, must notify the details on the entry form. The invoice will be sent by e-mail to the competitor.

The competitors who decline the Organiser's optional advertising must pay doubled amount of the entry fee and notify about this choice on their entry form. Advertising on the rally plate and starting numbers is obligatory and may not be refused by the competitors.

##### 4.4.1 Entry package

Printed materials, stickers and passes per crew	
Supplementary regulations	1
Road Book sets	2
Route Maps	2
Spectator programme	1
Service plate (Team)	1
Rally car sticker set	1
Recce car sticker	2
Crew / team passes	6

#### 4.5 PAYMENT DETAILS

Entry fees (SR Art.4.4) must be paid by bank transfer and must reach the Organiser's bank account no later than at 18:00 on Friday 29 June.

##### Bank account details:

Account Name: **Estonian Autosport Events MTU**  
 Name of the Bank: **LHV Pank AS**  
 Swift/BIC Code: **LHVBEE22**  
 Bank address: **Tartu mnt 2, 10145 Tallinn**  
 IBAN: **EE877700771002705577**

- The payment must include all charges involved with the transfer.
- Upon payment by bank transfer it is essential to provide the bank proof of payment by post or by e-mail to the Rally secretariat to certify that the payment has been sent prior to the close of entries (see SR Art. 4.1)

- Please ensure that the driver's or crew's names and "RE2018 Entry Fee" are included as a reference on the bank transfer document.
- The full payment of the entry fee must be on the Organisers bank account before the closing date for entries. No entry will be accepted without the full payment.

## 4.6 REFUNDS

The entry fee will be refunded **in full**:

- to candidates whose entry has not been accepted
- in the case of the rally not taking place due to fault of the Organiser

### Partial refund of entry fees:

The Organisers may refund **50% of the entry fee** to those Competitors who for reasons of "Force Majeure" (duly certified by their ASN) were unable to start the rally. The application for a refund, stating the reason for not starting, must reach in writing to the Organisers (e-mail [entry@rallyestonia.ee](mailto:entry@rallyestonia.ee)) before Thursday 5 July at 15:00. Bank account details must be included.

The crews who fail to inform the Organisers, will be reported to their ASN and their entry fee will not be reimbursed.

## 5. INSURANCE

### 5.1 INSURANCE COVERAGE FOR THE ORGANISER

#### 5.1.1 Organiser's liability insurance

EASU visa includes an insurance contract with AB "Lietuvos Draudimas", policy No 2106629875, with Organiser's liability insurance covering damage caused to a third party during the competition up to 500 000 EUR. The insurance period is from 1 February 2018 until 31 January 2018.

#### 5.1.2 Damage caused to the third party

A part of the insurance with AB "Lietuvos Draudimas", policy No 2106629875 is coverage for damages caused to a third party. However, damages caused by drivers among themselves are not covered by this contract.

#### 5.1.3 International Green Card

At pre-rally Scrutineering all crews have to hand in a valid International Green Card for their car. Without this card, the crew won't be permitted to start.

### 5.2 COMPETITORS' INSURANCE AND DECLARATION

Competitors and drivers must have valid insurance as is required by the Traffic Act, covering them against liability for both personal injury to, and damage to the property of, third parties on public road parts of the event. It is the Competitor's responsibility to arrange such insurance and/or to extend existing insurance so as to comply with the requirements of the Traffic Act. Competitors and drivers will be required to sign and declare that they are covered by such insurance. Any failure to sign a declaration may mean that the car in question may not be permitted to start.

The Organisers also decline any liability for breach of the laws and regulations of Estonia as covered by the itinerary. Competitors shall be held responsible for any accident or breach of laws in which they may be involved and shall declare to the promoters particulars of any incident from which liability may arise and shall have no claim against the Organisers arising out of the accidents of the Organisers, servants or officials during the course of the Rally.

Competitors and drivers will be required to sign the following declaration:

"I declare that:

1. I have been given the opportunity to read the codes and regulations of Shell Helix Rally Estonia 2018 (the "Event") held under the 2018 FIA International Sporting Code (FIA ISC) and its appendices, the 2018 FIA

Regional Rally Sporting Regulations (FIA RRSR), the 2018 Estonian Open Rally Championship Regulations, the 2018 Latvian Rally Championship Regulations and the Supplementary Regulations and I agree to be bound by them.

I declare that I am physically and mentally fit to take part in the Event and I am competent to do so. I acknowledge that I understand the nature and type of the Event and the potential risk inherent with motor sport and agree to accept that risk.

2. To the best of my belief the driver(s) possess(es) the standard of competence necessary for an event of the type to which this entry relates and that the vehicle entered is suitable and roadworthy for the Event having regard to the course and the speeds which will be reached.
3. The use of the vehicle hereby entered is covered by insurance as required by the law which is valid for such part of this event as shall take place on roads as defined by the law.
4. I understand that should I at the time of this Event be suffering from any disability whether permanent or temporary which is likely to affect prejudicially my normal control of the vehicle, I may not take part unless I have declared such disability to the FIA which has, following such declaration, issued a licence which permits me to do so.
5. Any application form for a Licence which was signed by a person under the age of 18 years was countersigned by that person's parent/legal guardian/guarantor, whose full names and addresses have been given.
6. I understand that motorsport is dangerous and accidents causing death, injury disability and property damage can and do happen. I understand that these risks may give rise to my suffering personal injury or other loss and I acknowledge and accept these risks. In case of an accident resulting in hospitalisation, I agree that the hospital may provide information about my medical condition to the Organisers.
7. In consideration of the acceptance of this entry I agree that neither any one of or any combination of the FIA, the EASU, the LAF, the track owners or other occupiers, the promoters and their respective officers, servants, representatives and agents (the "Parties") shall have any liability for loss or damage which may be sustained or incurred by me as a result of participation in the Event including but not limited to damage to property, economic loss, consequential loss or financial loss howsoever caused. Nothing in this clause is intended to or shall be deemed to exclude or limit liability for death or personal injury.
8. To the fullest extent permitted by law I agree to indemnify and hold harmless each of the Parties in respect of any loss or damage whatsoever and howsoever arising from my participation in the Event.
9. I hold a full, valid, current driving licence."

### 5.3 DAMAGE REPORTING

The crews are obliged to notify the Organiser about any damage caused on the track by their car immediately after the accident. Violation of this duty stands for summoning the Competitor and involved crew to a disciplinary committee.

### 5.4 INSURANCE COVERAGE EXCLUSIONS

VIP and Auxiliary vehicles, Service vehicles ("TEAM"), recce cars and other cars and vehicles with special plates issued by the Organiser are not covered by the provided rally insurance and those are always going on their own responsibility. The Organiser declines any responsibility about consequences raised from dishonest actions of the Competitor in relation with rally regulations and Supplementary Regulations, or the State's laws. In case of a road traffic accident neither a service car a reconnaissance car nor an official's car with rally markings are considered as crews of the competition. In these cases only a car owner third person's liability insurance policies are valid.

## 6. ADVERTISING & IDENTIFICATION

### 6.1 TOBACCO

Tobacco advertising is prohibited in Estonia.

## 6.2. COMPETITION NUMBERS AND RALLY PLATES

Competition numbers and rally plates will be provided by the Organisers and must be affixed to the car in the stated positions prior to Scrutineering and maintained during the whole event. **See Appendix 4** of these regulations for details concerning rally plates and competition numbers and their affixing.

## 6.3. ORGANISER'S OPTIONAL ADVERTISING

Competitors who have accepted optional advertising as specified in these Supplementary Regulations, must reserve space for it (67x34 cm, under the front door competition number panel, see Appendix 4). The advertising must be affixed to the car before pre-start Scrutineering.

No modifications are allowed to these panels.

## 6.4. LOSS OR REMOVAL OF COMPETITION NUMBERS AND ADVERTISING

Failure to comply with any regulations concerning the plates and identification numbers will be sanctioned as follows:

- One missing Rally Plate or Competition Number: cash penalty of 100 EUR
- Competition Numbers or Rally Plate are missing at the same time: reported to the Stewards
- Rally Plate failing to be visible or partially covering license plate: cash penalty of 100 EUR
- Missing Organiser's Optional Advertising at any moment: payment of Entry Fee without advertising

# 7. TYRES

## 7.1 NO OF TYRES & TYRE MARKING PROCEDURE

### 7.1.1 Eligible tyres

The number of tyres for the competition is not limited. All tyres used during the rally must be readily commercially available and must comply with FIA-RRSR, appendix V.

To be classified in Estonian Championship class EMV6, DMACK tyres must be used.

Any infringement to this rule will be reported to the Stewards.

**7.1.2 Tyre marking** is obligatory for all the competitors.

During the tyre marking procedure crews and up to one team member must give the Scrutineers any assistance required. The cars must be presented at the tyre Marking Zone with their spare wheels placed with the outer part of the rim on top, and if needed, unfastened, to facilitate the procedure. Following the marking, and before the cars departure from the tyre marking area, crews, or their team member, must properly fasten the spare wheels as required.

### 7.1.3 Tyre Marking during the rally

During the rally the Tyre Marking Zone will be after the exit TC from the Service Park at Otepää.

One team member for each crew may assist during the marking. This team member must enter and leave the Tyre Marking Zone at the same time with the car.

## 7.2 MEANS OF CONTROL

At any time during the rally, controls may be carried out to check the conformity of the tyres.

## 7.3 VEHICLE EQUIPMENT

Each entering vehicle is allowed to carry, on-board and properly fixed, a maximum of two spare wheels.

## 7.4 SANCTIONS

Any breach of the tyre regulations will be reported to the stewards, who may impose a sanction as provided for in Articles 12.2 and 12.3 of the FIA ISC.

## 7.5 TYRES USED FOR RECONNAISSANCE

Only E- or DOT-approved homologated road legal tyres are allowed. Retreaded tyres are forbidden for reconnaissance. Any treatment (ie. removing or damaging) on road tyres side markings or texts is not allowed.

## 7.6 NATIONAL LAWS OR SPECIAL REQUIREMENTS

The use of studded tyres is prohibited.

The use of tarmac tyres is prohibited.

## 8. FUEL

### 8.1 FUEL RESTRICTIONS

All FIA homologated cars are obliged to use fuel in compliance with FIA Appendix J.

National class cars that participate in EMV and LRC are allowed to use fuel (including E85), which is available for free sale in the Republic of Estonia, and whose octane number does not exceed 103.

All competitors are required fill in the Fuel Declaration (Appendix No.7) confirming that the used fuel is in accordance with regulations. The Fuel Declaration may be handed in and signed by fuel suppliers on behalf of the applicant, if they supply and fill the fuel only in the rally refueling areas.

### 8.2 REFUELLING

**8.2.1 All Competitors may only refuel in a Refuelling Zone (RZ).** There will be a Refuelling Zone marked in the Road Book:

- During the rally after the exit TC from the Service Park at Otepää.

#### 8.2.2 Refuelling at the exit of the service park

Competitors' cars may be refuelled from drums/cans with commercially available fuel and two team members with team passes may access the RZ to assist each crew. Refuelling from plastic canisters is forbidden.

#### 8.2.3 Refuelling procedure

Only crew members and support personnel are responsible for compliance with fire safety regulations during the refuelling. During refuelling a liquid proof mat has to be used. Penalty for infringement is 100 EUR.

## 9. RECONNAISSANCE

### 9.1 RECONNAISSANCE REGISTRATION

Reconnaissance registration will take place at the same time with administrative checks as follows:

Wednesday 11 July 17:00 – 20:00

Thursday 12 July 8:00 – 12:00

Location: Rally HQ, Tehvandi Sport Center, Otepää

#### 9.1.1 Registration form

The reconnaissance registration form, duly completed, including details of the reconnaissance car, driver and co-driver, Competitor's accommodation during the rally and team's contact phone number has to be submitted during the registration or sent by e-mail to [entry@rallyestonia.ee](mailto:entry@rallyestonia.ee) before registration. The form will be published with Rally Guide 2.

#### 9.1.2 Checking of Reconnaissance cars

Reconnaissance cars will be checked after collecting reconnaissance materials in front of Rally HQ and also during reconnaissance. Reconnaissance cars must comply with Art.25.1 of FIA RRSR.

If, for any reason, a crew is forced to replace the reconnaissance car during the reconnaissance, the Secretariat (phone: +372 73 55 101) must be informed about the details of the new reconnaissance car. Failure to follow this procedure will result in refusal to participate in the reconnaissance.

### 9.1.3 Reconnaissance identification

The crew will receive identification for their car (2 number stickers). The number stickers must be fixed to the top right of the front windscreen and rear right side window during reconnaissance at all the times.

During reconnaissance both team members must carry an ID document to be shown to the Organisers or the Police if needed. Failure to present an ID document during the reconnaissance will be reported to the Clerk of the Course and may result in refusal to participate in the reconnaissance.

## 9.2 RALLY-SAFETY-TRACKING-SYSTEM

The Organiser will provide a rally-safety-tracking-system, which has to be used during reconnaissance in the reconnaissance car. If the rally-safety-tracking-system will not be used, it is a breach of the reconnaissance regulations. The progress of the reconnaissance will be monitored via GPS system, by the Estonian Police together with other rally officials. GPS data will be monitored also during liaisons. Evaluation of the GPS data is within the competence of Clerk of the Course. If it will be observed that the reconnaissance vehicle is not equipped with a working tracking system, the crew will be penalized according to Stewards' decision.

After reconnaissance, crews must re-install the tracking system to the rally cars (See Art.11.8 of Supplementary Regulations).

### 9.2.1 Safety deposit

Each crew must pay a deposit of 200 EUR upon receipt of GPS safety equipment. Deposit will be refunded after proper return of the safety equipment after time control TC 16A IN, in the Holding Area. In case of retirement the GPS will be given to the provider of GPS units in Rally HQ by Sunday 15 July by 17:00 at the latest (phone number: +370 616 06 776).

## 9.3 RECONNAISSANCE TIME SCHEDULE

Reconnaissance Time Schedule is given in Appendix 2.

Reconnaissance of the route on the territory of Tehvandi Stadium complex (from Special Stages to Regrouping, Regrouping to Service Park, Service Park to Refuelling Zone) is allowed on Friday 13 July starting from 8:00.

## 9.4 RECONNAISSANCE RULES

The crews are obliged to follow all reconnaissance rules specified in FIA RRSR and these Supplementary Regulations.

### 9.4.1 Reconnaissance

Reconnaissance will be organised in compliance with art. 25 of FIA RRSR and only series production cars conforming to art. 25.1 of FIA RRSR must be used.

### 9.4.2 Speed limit (Art. 25.4.4 of RRSR):

All reconnaissance of the Special Stages has to be done at reasonable speed in accordance with Estonian traffic rules. The maximum speed set for the reconnaissance of the SS is 80 km/h, except for those areas in which there are speed limit signs or in built-up areas (50 km/h or 30 km/h) or other limitations marked in the Road Book. Breaking the rules and exceeding the speed limits on public roads will be also controlled and fined by the Estonian Police according to traffic laws of Estonia. **GPS data will also be monitored during liaisons.**

### 9.4.3 Direction

Each crew may drive the Special Stages only in the direction of the rally. The crews must always enter and leave the Special Stages through the start and stop points.

Exceptionally on SS1/4 crews are permitted to drive across the SS route at position 2.96 km. On SS 2/5 in order to do second passage of stage crews are permitted to drive to the start of the SS 110 metres in the opposite direction of the rally.

#### 9.4.4 Restriction of reconnaissance

Any driver, or his co-driver, or any other team member who has entered or intends to enter the rally and who wishes to drive 3 months ahead the rally on any road which is or might be used as a Special Stage in that rally, may only do so after he has obtained written permission from Clerk of the Course. Failure to respect this rule shall result in the driver being reported to the Stewards. The restricted roads will be published in Appendix 6 of the Supplementary Regulations.

#### 9.4.5 Number of persons on board

During each passage through a Special Stage, a maximum of 2 persons (the crew) are permitted in the car.

#### 9.4.6 Number of passages

Reconnaissance is permitted a maximum of 2 passages over each Special Stage (Special Stages run twice are considered to be one Special Stage).

#### 9.4.7 Illegal reconnaissance

Illegal reconnaissance performed out of the Time Schedule or performing more passages than permitted will be reported to the Stewards.

#### 9.4.8 Speeding

Speeding will be penalized according to the Art. 20.2 and 20.3 of FIA RRSR.

Speeding during reconnaissance will incur a fine applied by the Clerk of the Course as follows - per km per hour over the speed limit: **all drivers 25 EUR.**

The fine will be doubled in case of a second offence committed during reconnaissance.

#### 9.4.9 Radar detection equipment

The fitting or carrying of radar detection equipment during reconnaissance is not permitted. Infringements will be reported to Stewards.

## 10. ADMINISTRATIVE CHECKS

### 10.1 DOCUMENTS TO BE PRESENTED

At Administrative Checks the following documents will be checked and entry form details verified:

- Competitor's license
- Driver and Co-driver competition licenses
- Driver and Co-driver valid driving licence
- ASN authorisation (mandatory for all foreign Competitors and/or drivers)
- Completion of all details on the entry form
- Valid personal accident insurance of non-EU drivers
- Car registration papers

### 10.2 TIMETABLE

**Administrative Checks will take place at the same time with Reconnaissance registration as follows:**

Wednesday 11 July 17:00 – 20:00

Thursday 12 July 8:00 – 12:00

Location: Rally HQ, Tehvandi Sport Center, Otepää

All Administrative Checks must be completed by 12:00 on Thursday 12 July at Rally HQ.

Drivers and co-drivers must be present at Administrative Checks.



## 11. SCRUTINEERING, SEALING AND MARKING

### 11.1 SCRUTINEERING VENUE AND TIMETABLE

Venue: Ski Jumping Hill in Otepää (the relevant road book will be provided in the Rally Guide)

Date: Thursday 12 July at 12:00-20:00 Scrutineering, sealing & marking of components for all drivers.

**The detailed timetable for pre-rally Scrutineering will be published in a Bulletin.**

Any crew taking part in the rally, or their representative must arrive at the Scrutineering and present the car in accordance with the timetable to be issued in a Bulletin. **Any lateness entering to pre-rally Scrutineering area will be sanctioned with a fine of 30 EUR for each 10 minutes delayed.** Driver and co-driver are not required to attend Scrutineering.

Marking of gearboxes, speed reduction devices, turbochargers and engine's blocks will be done during the scrutineering of race cars.

### 11.2 DOCUMENTS TO BE PRESENTED AT SCRUTINEERING:

- Vehicle registration document, when it's applicable;
- power of attorney from the owner of the car, if he/she is not one of the drivers (not applicable to cars registered in Estonia);
- Valid vehicle insurance policy (e.g. Green Card);
- Vehicle ASN technical passport, when it's applicable;
- Vehicle FIA technical passport, when it's applicable;
- **Vehicle original FIA homologation form.** In addition, homologation form for rollcage (if homologated) must be with the car at Scrutineering.

### 11.3 TRANSVERSAL MUD-FLAPS

It is mandatory for all participating cars to be equipped with transverse mud-flaps (all wheels) in conformity with Appendix J (Art. 252-7.7).

### 11.4 WINDOWS

The use of silvered or tinted films is authorized on rear side windows and rear window only (in conformity with Appendix J Article 253-11).

### 11.5 DRIVERS' SAFETY EQUIPMENT

At Scrutineering Competitors must produce all items of protective clothing, underwear, including helmets and a FIA approved head restraint (FHR, formerly called HANS) intended to be used. Compliance with Appendix L Chapter III will be checked. The use of driver's safety equipment may be checked at any time.

*The FHR is not compulsory in class EMV10 (trucks).*

### 11.6 NOISE LEVEL

The maximum noise level must not exceed 103 dB(A) for an engine rotation speed of 3500 rpm for petrol engines and 2500 rpm for diesel engines. Any vehicle over this limit will not pass Scrutineering.

### 11.7 SPECIAL REQUIREMENTS

**11.7.1** Each competing car must be equipped with a first aid kit and 1 reflective triangle. This equipment will be checked at Scrutineering and may be checked during the event.

**11.7.2** Competitors are reminded that two belt cutters must be carried on board at all times. They must be easily accessible to driver and co-driver when seated with their safety belts fastened (Art. 253-6, Appendix J).

**11.7.3** Each competing car must carry a red "SOS" sign and on the reverse a green "OK" sign measuring at least 42 cm x 29.7 cm (A3), in conformity to FIA RRSR Article 40.2.

## 11.8 SPEED CONTROL AND SAFETY TRACKING SYSTEM FOR RECONNAISSANCE AND RALLY CARS

**11.8.1** All Competitors must make provision in their cars for the installation of the Safety Tracking System. Systems will be issued at the Administrative Checks. All further details will be given during presentation to each crew and in Rally Guide.

**11.8.2** Competitors must have installed the speed control and safety tracking devices in reconnaissance cars before reconnaissance starts. **The system must be re-installed to the rally cars by the crews and must be shown to the Scrutineers in places given at 11.8.3 or before TC0 on Saturday 14 July morning.**

**11.8.3** If crews wish to participate in Shakedown they must arrive at the start of Shakedown with checked system. Crews taking part in Shakedown must present the fitted GPS device at the exit of Service Park. Competition cars not equipped with the GPS tracking device will not be allowed to start.

**11.8.4** Any attempt to tamper with, to manipulate or to interfere with the tracking device fitted to the competition car or any device that fails to record a trace due to external interference will be reported to the Stewards who may impose a penalty up to exclusion.

**11.8.5** GPS units and brackets will be disassembled from the rally cars by the crew after time control TC 16A IN, in the Regrouping & Technical Zone and handed over to the GPS provider. Deposit will be refunded on the spot after proper return of the safety equipment.

In case of retirement the GPS will be given to the provider of GPS units in Rally HQ by Sunday 15 July by 17:00 at the latest (phone number: +370 616 06 776).

### 11.8.6 Principles on Security and Tracking

Security and tracking devices are connected to a monitoring centre that stores all data received. All data is stored on the same device. The device has a self-contained power supply that operates throughout the rally.

The device has „SOS“ and „OK“ buttons.

Each device has a unique serial number that is assigned to each crew. During the event the Rally HQ will monitor the position and speed data of each crew.

### 11.8.7 “SOS” and “OK” signalling principles

By pressing a “SOS” button a crew reports an accident and requests an immediate assistance. In this case, it is obligatory to inform the Rally HQ by calling the telephone number indicated on the label.

In case of an accident or technical problem during a Special Stage, by pressing an “OK” button a crew informs of a stop for more than 30 seconds and that immediate assistance is not required (even if a crew is trying to continue the rally).

**Attention! In case of stopping at a Special Stage the device sends a “SOS” signal and the crew within 30 seconds must press “OK” button to remove the “SOS” signal sent by the system. A mobile phone of the crew must be switched on (or turned on in 60 seconds) so that the Race Control Centre can reach the crew.**

Wrong “SOS” and/or “OK” signal transmission will be reported to the Stewards who may apply a penalty.

## 11.9 Additional sensors

WRC cars are allowed to use additional measuring sensors on their rally cars which do not affect competitiveness.

## 12. OTHER PROCEDURES

### 12.1 SHAKEDOWN

#### 12.1.1 Entry procedure for Shakedown

Closing date for Shakedown entries: Tuesday 3 July at 18:00.

For participating in Shakedown, an e-mail must be sent to [entry@rallyestonia.ee](mailto:entry@rallyestonia.ee) and payment made by 18:00 on 3 July at the latest.

The fee for participating in Shakedown is 150 EUR + VAT 20%.

#### 12.1.2 Shakedown rules

Reconnaissance of Shakedown will be according to Appendix 2 of the SR, max. 2 passages.

Reconnaissance of the shakedown route during course of the shakedown is not allowed.

The location of Shakedown will be published in a COC communication.

Shakedown time: Friday 13 July at 10:00-16:00 for P1 drivers. List of P1 drivers will be published in a Bulletin.

Friday 13 July at 12:00-16:00 for all other drivers

Only competitors who have passed Scrutineering are permitted to participate in Shakedown. Competition numbers and advertising plates must be affixed to the cars. Driver and co-driver are obliged to wear safety equipment as for the Special Stages during the competition. Competition cars not equipped with the GPS tracking device will not be allowed to start.

Number of passages is not limited during Shakedown. Drivers will start at Shakedown with 1-minute intervals.

Any person on board the car during Shakedown who is not entered for the rally must have signed the disclaimer (issued in Rally Guide 2) accompanied by photocopy of Passport or Identity Card, waving the Organisers as well the driver and/or a Competitor of any consequence that may result from an accident. This disclaimer must be presented to Rally HQ before Thursday 12 July at 18:00 and approved by the Clerk of Course.

### 12.3 CEREMONIAL START

#### Ceremonial Start procedure

Before Ceremonial Start there will be an autograph signing session for invited drivers. The list of drivers will be published in a COC communication.

The start list for the Ceremonial Start will be published on Friday 13 July at 16:00.

The start interval for the Ceremonial Start will be 1 minute for all crews.

**Crews will start the Ceremonial Podium in the sequential order of competition numbers (Car no.1 is first to drive over the Ceremonial Podium, followed by car.no.2, 3 etc).**

The Ceremonial Start will take place on Friday 13 July at 21:00 on Podium in the centre of Tartu.

A Holding Zone will be organised before the Start Podium. Competition cars must be present in this Holding Zone one hour before their own starting time. Cars may not be transported to the Holding Zone on trailer, but they may be unloaded from the trailer in the area shown in Rally Guide 2.

From the moment Competitors arrive at the Holding Zone, repairs or any assistance will not be allowed.

All crews must wear overalls or team clothing during the Ceremonial Start.

After the Podium Ceremony, cars may be driven to overnight parking arranged by the Organiser (optional).

### 12.4 START PROCEDURE AND ORDER

#### 12.4.1 Starting order and intervals

The start order and start intervals for Leg 1 will be published on Friday 13 July at 19:00 (Publication of Start List for Leg 1 Section 1). The start order for Leg 2 shall be based on the classification after SS 10. The Clerk of the Course may, for reasons of safety and with the knowledge of the Stewards, reposition drivers or change the time interval between cars.

#### 12.4.2 Start procedure for Special Stages

Start Procedure for Special Stages will be as follows:

- On the start position the crew stops when instructed by marshals;
- When the start marshal confirms the car is on the right start position – 40 cm before electronic controlled start line the car must stay immovable till start moment and the team must visually follow the light signal of light shield;

- On the light shield the time will be shown;
- 30 seconds before start the marshal passes the Time Card to co-driver;
- 25 seconds before start on the shield the remaining seconds until start will be shown;
- The last 5 seconds of the pre-start minute are marked with five red light signals. When all signals go out, the road for start is free;
- If the crew's car crosses the electronic controlled start line before the red lights go out, false start will be fixed automatically which will flash in with 5 seconds delay, penalization for false start accordingly to FIA RRSR Art.37.6.
- The start marshal makes the final decision about false start and notes this in the start report;
- In case of start system malfunction; the start will be given by marshal in accordance with article 37.3. of FIA RRSR.

#### **12.4.3 Re-start after retirement / Rally 2**

Any crew which has failed to complete Leg 1 can re-start the rally from the start of the Leg 2 only if they confirm their intention in writing to the Clerk of the Course one hour prior to the publication of the start list of Leg 2 at 22:00 on Saturday 14 July. The competitor must advise the organiser in writing of the reason for retirement (e.g. accident, technical problems, etc.) and the intention to have the car re-scrutineered.

This shall apply to any car which has been not classified on the grounds of exceeding the time limit or has failed to report to a control, but shall not apply where the car has been excluded for breach of eligibility requirements, traffic infringements or by a decision of the stewards.

The restarting car must report to the overnight Parc Fermé prior to Leg 2, on Sunday 15 July at 7:00. The re-scrutineering will take place at TC 11B (Parc Fermé, Corner of Vabaduse Str and Gildi Str, Tartu).

#### **12.5 FINISH PROCEDURE AND POST-EVENT PRESS CONFERENCE**

After the final Special Stage all crews will continue to the end of rally Podium Finish in Tartu.

The finish of the rally will be at TC 16A. From there, Competitors must follow instructions of the officials and Road Book to drive over the Finish Podium and to Parc Fermé. Cars to be expected for Final Scrutineering will be collected and guided by the officials from the Parc Fermé.

Prizes for all Competitors/crews will be awarded on the Podium. For the first, second and third in the overall classification an "Olympic-style" podium will be used.

Selected drivers are expected to attend the Press Conference at 16:15 on the Podium.

#### **12.6 REMOVAL OF CARS FROM THE FINAL PARC FERMÉ**

Cars may be removed from final Parc Fermé once the Stewards authorise its opening. Provided that the above takes place as scheduled, all cars must be removed no later than 21:00 on Sunday 15 July.

In order to collect their cars, drivers or their authorised representative must present the "Removal of car from the final PF" document issued by the Organisers to the marshal in charge. This document will be distributed to Competitors when entering the final Parc Fermé.

#### **12.7 PERMITTED EARLY CHECK-IN**

Crews are authorised to check-in early without time penalty at:

- \* TC 11A (end of leg 1)
- \* TC 16A (finish of the rally)

#### **12.8 TIME CARDS**

**12.8.1.** New time cards will be issued to the Competitors at the following time controls: TC 0, TC 3A, TC 6A, TC 8A, TC 10A, TC 11B, TC 13A, TC 15A.

**12.8.2.** Upon retiring, a crew must hand in its time card either to a marshal at a time Control or to the sweeping car.

#### **12.9 OFFICIAL TIME USED DURING THE RALLY**

Throughout the rally, the official time will be Eastern European Summer Time (CET+2, UTC +3).

## 12.10 SERVICE PARK

Service regulations will be in accordance with FIA RRSR.

Service Park is located at Tehvandi Sport Center at Otepää. Surface: tarmac and gravel.

There will be a Regrouping Area / Technical Zone, Tyre Marking Zone and a Refuelling Zone.

There is no flexi-service nor Remote Service Zone during the competition.

**12.10.1** The service space reserved in the Service Park for each competition car is as follows:

P1 teams	150m <sup>2</sup> for 1 car + 50 m <sup>2</sup> any additional car
Other competitors	72 m <sup>2</sup> for 1 car

If a Competitor has multiple competition cars to be located together in Service Park, the application for consecutive Service Areas must reach the Organiser by Wednesday 4 July at 12:00 at the latest.

In agreement with the Organiser, Competitors may order additional service space with the price of 20 EUR/m<sup>2</sup> + 20% VAT, in case there is still additional space available in the Service Park.

Competitors may order electricity with the price of 55 EUR + 20% VAT. The Service Park Order form will be published with Rally Guide.

**12.10.2** In Service Park, all crews are obliged to have a liquid-proof tarp of minimum 3x5m under competition cars. Drilling or any other damages to the surface of the Service Park have to be avoided. Teams must bring weights for fixing their tents. Each Competitor is liable for the damages to the Service Zone allocated to them. After the rally, the Service Park has to be handed over in tidy condition. The crews are responsible for the removal of their waste and sewage.

**12.10.3** Two service vehicles per P1 teams and one service vehicle per all other competitors are allowed in Service Park. The vehicles must be clearly identified by a "Team" sticker issued by the Organiser and affixed on the windscreen.

Team / VIP plates (stickers) must be affixed to the upper side of the windscreen on the right (passenger) side.

Removal of the sticker is prohibited until the end of the rally.

Reconnaissance cars and VIP vehicles are not allowed to enter Service Park. Nearby Parking area will be available for the other registered vehicles (Recce/VIP).

**12.10.4** 2 (two) 6kg fire extinguishers are required in crew's service area.

### 12.10.5. Catering within the Service Park

Using open fire (grill, log fire) in Service Park is prohibited.

Apart from the provision of a catering service for the drivers and service crew personnel of a team, any other form of catering or sale of food and beverages in the Service Park is prohibited. The only exception is where a written agreement has been entered into between a team and the Organisers.

**12.10.6.** Competitors who fail to comply with Service Park rules are subject to a penalty starting from 300 EUR up to exclusion.

## 12.11 MEDIA ZONES

A Media Zone will be established for the Media outside of Regrouping area at Otepää Tehvandi Stadium before entering Service Parks, access only with media pass.

## 12.12 CAR WASH FACILITY

During the rally, an official car wash facility will be available before the entrance to the Service Park at Otepää.

Besides the crew, no other team member and/or mechanic is allowed to be present in this area.

## 12.13 ON-BOARD CAMERAS

The use of on-board cameras is allowed. The Competitor must share the footages with the Organiser upon request. The mountings of the cameras and recorders must be able to withstand a deceleration of 25g. Cameras must not be fitted between and/or on the side of driver or co-driver seats. The on-board camera system as fitted must be approved by the scrutineers.

## 12.14 ENTRANCE TO THE REGROUPING AREA AND PARC FERMÉ

### 12.14.1 Safety GPS tracking

Safety GPS tracking workers are allowed to enter the regrouping area and Parc Fermé in order to maintain or repair the GPS tracking systems installed in the rally cars. They have to be accompanied by a Scrutineer and the representative of the team (driver, co-driver or Competitor).

## 12.15 CREW-RELATED AIR VEHICLES

With a crew-related air vehicles (hereinafter referred to as the aircraft) located in one of the rally venue must be agreed with the Organiser of the rally, upon written notice to the Organiser (for instructions see Rally Guide). For such authorization, the Organiser is entitled to request an additional fee. An aircraft pilot must comply with all current provisions of Estonian Republic, which is attributable to the aircrafts. In addition the Estonian Rally rules relating to service and team personnel actions during the race are applicable. During the race, the landing of aircraft is prohibited in locations not agreed with the Organiser and in locations closer than 100 m from any of the rally track judges' points.

## 12.16 CHICANES

Due to safety reasons, chicanes will be positioned on the rally route to reduce speed of rally cars. For the duration of Reconnaissance, if possible the Chicanes will be positioned on the spots where they will stand also during the rally. On the spots where positioning of chicanes for the duration of Reconnaissance is not possible, the spots will be marked on the road.

Judges of Fact will monitor the correct passing of the chicanes. The list of Judges of Fact will be published on the Official Notice Board in compliance with FIA ISC Art. 11.16.3.

Failure to pass the chicanes in a correct manner will be penalised by the Stewards.

## 12.17 PENALTIES

All cash penalties applied for any pre-start infringements must be paid before Friday 13 July at 13:00 at the latest to the Secretary of the Rally in the Rally HQ. Failure to pay will be reported to the Stewards.

## 12.18 FIRST AID TRAINING

All competitors are obliged to pass a first aid training in front of Rally HQ in Tehvandi Sports Centre. The duration of the training is approximately 15 minutes. The crew can attend the training at any time from 9:00 to 17:00 on Friday 13 July.

## 13. IDENTIFICATION OF OFFICIALS AND MEDIA

Official function with text on tabard	Colour of the identification tabard
Stage Commander	Red with text
Stage Safety Officer	Orange
Safety Marshal	Yellow/green with marking
Competitors' Relations Officer	Red with text
Scrutineer	Black
Media	Purple
Radio Point Marshal	Yellow/green with marking
Judges of fact	Yellow/green

## 14. PRIZES

**14.1 The prizes are awarded as follows:**

### 14.1.1 Rally overall classification

Best 3 crews will be awarded.

### 14.1.2 Baltic Rally Trophy

Best three crews in each class will be awarded.

### 14.1.3 Estonian Rally Championship

Best three crews in each class and best three teams will be awarded.

### 14.1.4 Latvian Rally Championship

Best three crews in each class, the first LRC Junior and the first LRC team will be awarded.

## 14.2 SPECIAL PRIZES

A list of Special Prizes will be published on the Official Notice Board before the start of the rally.

## 14.3 PRIZE-GIVING

Date: Sunday, 15 July starting from 16:00

Location: Podium at Town Hall Square, Tartu

Prizes for all crews will be awarded on the Podium, save for the first, second and third in the overall classification where an "Olympic-style" podium will be used.

The ownership of prizes handed to the winners will be confirmed after the Official Final Classification.

## 15. FINAL CHECKS AND PROTESTS

### 15.1 Final Scrutineering

Date: Sunday 15 July starting from 17:45.

Venue: Tehvandi Ski-Jumping Hill, Otepää

Competitors who will be selected for final Scrutineering (Stewards' decision) are requested to provide proper equipment (including all sealed spare parts) and mechanics at the Final Scrutineering venue.

Each selected car will be driven to Final Scrutineering by a designated member of the team (who must be present at the finish), and accompanied by an official.

In case of a protest, the said car will be checked at the same venue.

### 15.2 PROTEST DEPOSIT

The protest deposit is **€1000** (FIA RRSR Art. 55.2).

If a protest requires the dismantling and re-assembly of different parts of the car, the claimant must pay an additional deposit:

**15.2.1** For a protest involving only a clearly defined part of the car (engine, transmission, steering, braking system, electrical installation, body work, etc.): additional deposit **€ 500.00**

**15.2.2** For a protest involving the whole car: additional deposit **€ 1,000.00**

### 15.3 APPEAL DEPOSIT

The sum for an international appeal deposit (FIA) is: **€ 3,000.00**

## APPENDIX 1. ITINERARY

### LEG1

Appendix 1. Leg 1 (Sunrise: 4:28, Sunset: 22:09)						Saturday, 14th July 2018
TC	LOCATION	SS dist.	Liaison Dist.	Total dist.	Target time	1st car due
0	PF OUT					7:00
0A	Service A IN		48,11	48,11	0:45	7:45
<b>SERVICE A - OTEPÄÄ</b>			<b>(48,11)</b>	<b>(48,11)</b>	<b>0:15</b>	
0B	Service A OUT					8:00
<b>RZ</b>	Refuel Otepää					
<b>1</b>	Distance to next refuel	<b>(15,00)</b>	<b>(42,06)</b>	<b>(57,06)</b>		
1			6,32	6,32	0:15	8:15
SS1	<b>RAIGA 1</b>	<b>6,28</b>				<b>8:18</b>
2			14,84	21,12	0:24	8:42
SS2	<b>ARULA 1</b>	<b>8,72</b>				<b>8:45</b>
2A	Service B IN		20,90	29,62	0:32	9:17
<b>SERVICE B - OTEPÄÄ</b>			<b>(15,00)</b>	<b>(42,06)</b>	<b>0:20</b>	
2B	Service B OUT					9:37
<b>RZ</b>	Refuel Otepää					
<b>2</b>	Distance to next refuel	<b>(9,14)</b>	<b>(12,85)</b>	<b>(21,99)</b>		
3			3,70	3,70	0:13	9:50
SS3	<b>RÜA 1</b>	<b>9,14</b>				<b>9:53</b>
3A	Regrouping & Technical Zone IN		9,15	18,29	0:20	10:13
<b>Regrouping/Technical Zone (Otepää)</b>					<b>0:10</b>	
3B	Regrouping OUT / Service C IN					10:23
<b>SERVICE C - OTEPÄÄ</b>			<b>(9,14)</b>	<b>(12,85)</b>	<b>0:30</b>	
3C	Service C OUT					10:53
<b>RZ</b>	Refuel Otepää					
<b>3</b>	Distance to next refuel	<b>(15,00)</b>	<b>(42,06)</b>	<b>(57,06)</b>		
4			6,32	6,32	0:15	11:08
SS4	<b>RAIGA 2</b>	<b>6,28</b>				<b>11:11</b>
5			14,84	21,12	0:24	11:35
SS5	<b>ARULA 2</b>	<b>8,72</b>				<b>11:38</b>
5A	Service D IN		20,90	29,62	0:32	12:10
<b>SERVICE D - OTEPÄÄ</b>			<b>(15,00)</b>	<b>(42,06)</b>	<b>0:20</b>	
5B	Service D OUT					12:30

Section 1

Section 2



<b>RZ</b>	Refuel Otepää					
<b>4</b>	Distance to next refuel	<b>(9,14)</b>	<b>(12,85)</b>	<b>(21,99)</b>		
6			3,70	3,70	0:13	12:43
<b>SS6</b>	<b>RÜA 2</b>	<b>9,14</b>				<b>12:46</b>
6A	Regrouping & Technical Zone IN		9,15	18,29	0:20	13:06
<b>Regrouping/Technical Zone (Otepää)</b>					<b>0:10</b>	
6B	Regrouping OUT / Service E IN					13:16
<b>SERVICE E - OTEPÄÄ</b>		<b>(9,14)</b>	<b>(12,85)</b>	<b>(21,99)</b>	<b>0:30</b>	
6C	Service E OUT					13:46
<b>RZ</b>	Refuel Otepää					
<b>5</b>	Distance to next refuel	<b>(20,11)</b>	<b>(46,03)</b>	<b>(66,14)</b>		
7			10,97	10,97	0:17	14:03
<b>SS7</b>	<b>KARSTE 1</b>	<b>6,45</b>				<b>14:06</b>
8			17,21	23,66	0:39	14:45
<b>SS8</b>	<b>KRÜÜDNERI 1</b>	<b>13,66</b>				<b>14:48</b>
8A	Regrouping & Technical Zone IN		17,85	31,51	0:40	15:28
<b>Regrouping/Technical Zone (Otepää)</b>					<b>0:20</b>	
8B	Regrouping OUT / Service F IN					15:48
<b>SERVICE F - OTEPÄÄ</b>		<b>(20,11)</b>	<b>(46,03)</b>	<b>(66,14)</b>	<b>0:45</b>	
8C	Service F OUT					16:33
<b>RZ</b>	Refuel Otepää					
<b>6</b>	Distance to next refuel	<b>(20,11)</b>	<b>(46,03)</b>	<b>(66,14)</b>		
9			10,97	10,97	0:17	16:50
<b>SS9</b>	<b>KARSTE 2</b>	<b>6,45</b>				<b>16:53</b>
10			17,21	23,66	0:36	17:29
<b>SS10</b>	<b>KRÜÜDNERI 2</b>	<b>13,66</b>				<b>17:32</b>
10A	Regrouping & Technical Zone IN		17,85	31,51	0:40	18:12
<b>Regrouping/Technical Zone (Otepää)</b>					<b>0:10</b>	
10B	Regrouping OUT / Service G IN					18:22
<b>SERVICE G - OTEPÄÄ</b>		<b>(20,11)</b>	<b>(46,03)</b>	<b>(66,14)</b>	<b>0:15</b>	
10C	Service G OUT					18:37
<b>RZ</b>	Refuel Otepää					
<b>7</b>	Distance to next refuel	<b>(1,87)</b>	<b>(106,11)</b>	<b>(107,98)</b>		
11			56,30	56,30	0:50	19:27
<b>SS11</b>	<b>TARTU CITY</b>	<b>1,87</b>				<b>19:30</b>
11A	Parc Ferme IN (Early check-in permitted)		1,70	3,57	0:12	19:42
		<b>(1,87)</b>	<b>(58,00)</b>	<b>(59,87)</b>		
<b>All Cars (except re-starting crews) to be in Parc Ferme no later than</b>						<b>22:30</b>
<b>LEG1 TOTAL</b>		<b>(90,37)</b>	<b>(307,99)</b>	<b>(398,36)</b>		

Section 3

Section 4

Section 5

**LEG2**

Appendix 1. Leg 2 (Sunrise: 4:30, Sunset: 22:07)						Sunday, 15th July 2018
TC	LOCATION	SS dist.	Liaison Dist.	Total dist.	Target time	1st car due
11B	PF OUT					<b>8:00</b>
11C	Regrouping & Technical Zone IN		48,11	48,11	0:45	<b>8:45</b>
<b>Regrouping/Technical Zone (Otepää)</b>					0:10	
11D	Regrouping OUT / Service H IN					<b>8:55</b>
<b>SERVICE H - OTEPÄÄ</b>		<b>0,00</b>	<b>(48,11)</b>	<b>(48,11)</b>	0:15	
11E	Service H OUT					9:10
<b>RZ</b>	Refuel Otepää					
<b>8</b>	Distance to next refuel	<b>(27,06)</b>	<b>(58,72)</b>	<b>(85,78)</b>		
12			12,06	12,06	0:18	9:28
SS12	<b>PUUGI 1</b>	<b>10,00</b>				<b>9:31</b>
13			9,82	19,82	0:30	10:01
SS13	<b>PRANGLI 1</b>	<b>17,06</b>				<b>10:04</b>
13A	Regrouping & Technical Zone IN		36,84	53,90	0:51	10:55
<b>Regrouping/Technical Zone (Otepää)</b>					0:20	
13B	Regrouping OUT / Service I IN					11:15
<b>SERVICE I - OTEPÄÄ</b>		<b>(27,06)</b>	<b>(58,72)</b>	<b>(85,78)</b>	0:45	
13C	Service I OUT					12:00
<b>RZ</b>	Refuel Otepää					
<b>9</b>	Distance to next refuel	<b>(27,06)</b>	<b>(58,72)</b>	<b>(85,78)</b>		
14			12,06	12,06	0:18	12:18
SS14	<b>PUUGI 2</b>	<b>10,00</b>				<b>12:21</b>
15			9,82	19,82	0:30	12:51
SS15	<b>PRANGLI 2</b>	<b>17,06</b>				<b>12:54</b>
15A	Regrouping & Technical Zone IN		36,84	53,90	0:51	13:45
<b>Regrouping/Technical Zone (Otepää)</b>					0:10	
15B	Regrouping OUT / Service I IN					13:55
<b>SERVICE I - OTEPÄÄ</b>		<b>(27,06)</b>	<b>(58,72)</b>	<b>(85,78)</b>	0:20	
15C	Service I OUT					14:15
<b>RZ</b>	Refuel Otepää					
<b>10</b>	Distance to next refuel	<b>(1,55)</b>	<b>(56,60)</b>	<b>(58,15)</b>		
16			27,40	27,40	0:29	14:44
SS16	<b>ELVA CITY STAGE</b>	<b>1,55</b>				<b>14:47</b>

Section 6

Section 7

Section 8

16A	Holding IN/Technical Zone IN (Early check-in permitted)	29,20	30,75	0:35	15:22	
	<b>PODIUM - TARTU</b>			0:38	16:00	
	Parc Ferme IN (Early check-in permitted)				16:45	
<hr/>						
<b>Leg 2 totals</b>		<b>(55,67)</b>	<b>(222,15)</b>	<b>(277,82)</b>		
<hr/>						
<b>TOTALS OF THE RALLY</b>						
		<b>SS</b>	<b>Liaison</b>	<b>Total</b>	<b>%</b>	
	Saturday 14 July /Sections 1,2,3,4,5	90,37	307,99	398,36	23%	
	Sunday 15.July /Sections 6,7,8	55,67	222,15	277,82	20%	
	<b>TOTAL - 16 SS</b>	<b>146,04</b>	<b>530,14</b>	<b>676,18</b>	<b>21,6%</b>	

## APPENDIX 2. RECONNAISSANCE SCHEDULE

Each crew is limited to two passages on each Special Stage.  
Special Stages run twice are considered to be one Special Stage.

### **THURSDAY, 12 JULY**

**Time: 10:00 – 21:00**

SS 1/4  
SS 2/5  
SS 3/6  
SS 7/9  
SS 8/10  
SS 12/14  
SS 13/15  
Shakedown

**Time: 17:00 – 21:00**

SS 16

### **FRIDAY, 13 JULY**

**Time: 8:00 – 11:00**

SS 1/4  
SS 2/5  
SS 3/6  
SS 7/9  
SS 8/10  
SS 11 (reconnaissance possible only on 13 July)  
SS 12/14  
SS 13/15

Reconnaissance on the route on the territory of Tehvandi Stadium complex (from Special Stages to Regrouping, Regrouping to Service Park, Service Park to Refuelling Zone) is allowed on Friday 13 July starting from 8:00.

### APPENDIX 3. COMPETITORS' RELATIONS OFFICERS



**INGER TUUR**  
Phone +372 50 31 307  
(Estonian, English, Finnish)



**SIMO PÄRNÄNEN**  
Phone +358 440 747 120  
(Finnish, English)



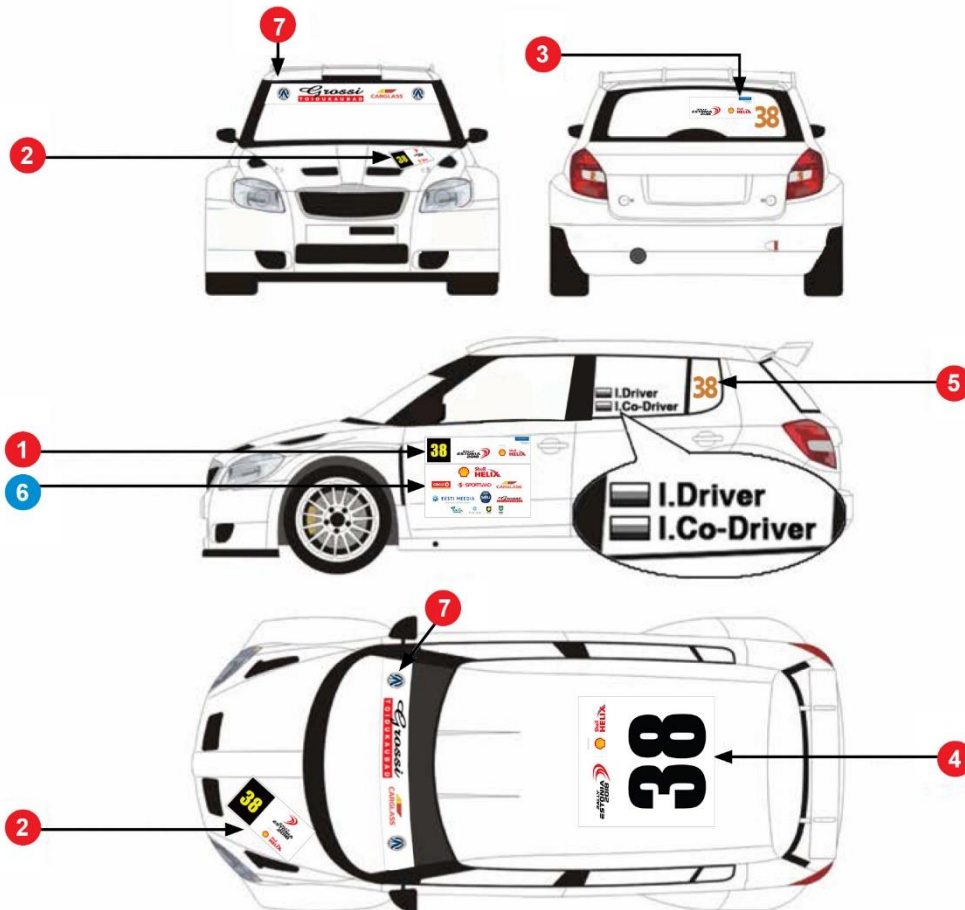
**ANDRIS MĀLNIĒKS**  
Phone +371 27 854 854  
(Latvian, English, Russian, German)

The COMPETITORS' RELATIONS OFFICERS will be identifiable by a red tabard with text CRO.

The CROs will be present at the Administrative Checks, Shakedown, Scrutineering, Opening Ceremony, Service Parks, Start/End of Leg 1 and 2, Regrouping areas and Rally Finish.

A detailed CROs' Schedule will be posted on the Official Notice Board / Virtual Notice Board and will also be provided to Competitors during Administrative Checks.

## APPENDIX 4. COMPETITION NUMBERS AND ADVERTISING



- **Obligatory Advertising, Competition Numbers**

**1 – door panels** (2 per car): Two rectangular panels measuring 67x17cm including 1 cm white surround. Each of those panels shall comprise a matt black competition number box, which shall always be at the front of the panel. Numerals will be fluorescent yellow (PMS 803) 14 cm high and with a stroke width of 2 cm. The remainder of this door panel is reserved for the compulsory advertising of the Organiser. This advertising is **Shell Helix Rally Estonia** (cutting not allowed) for both front doors of the car with the number facing the front of the car (7 to 10cm of the bottom line of the side window). Each panel shall be placed horizontally at the leading edge of each front door, with the number at the front. **No signage other than the colour scheme of the car shall be placed within 10 cm of this panel.**

**2 – front plate** (bonnet, 1 per car): One front plate measuring 43x21.5cm placed on the bonnet of the car, including the competition number and the full name of the Rally **Shell Helix Rally Estonia**. (Art 18 of FIA RRSR)

**3 – rear window** (1 per car): One rear window panel measuring a maximum of 30 cm wide and 10 cm high shall be positioned at the top of the rear window **at the right side**. An adjacent area of 15 cm (cutting not allowed) shall contain a fluorescent orange (PMS 804) 14 cm high competition number on a clear background. This number may be reflective and must be visible from the rear at eye level (as shown in the drawing).

**4 - roof panel** (1 per car): One rectangular roof panel measuring 50x52cm with matt black competition number 5 cm wide and 28 cm high will be displayed on matt white background of 50 cm wide and 38 cm high. The organiser advertising **Shell Helix Rally Estonia** (cutting not allowed) will fit in to an area of the same width and 2 x 7 cm high placed on the roof with top facing towards front of the car.

**5 – rear side windows** (2 per car): Two competition numbers measuring 20cm high, with a stroke width of 25 mm coloured fluorescent orange (PMS 804) and may be reflective, one for each rear side window, adjacent to the crew's names and national flags.

**7 – front windshield stripe:** reserved by Estonian Autosport Union with sponsor logos (Grossi Toidukaubad and Carglass)

- **Optional Advertising – space reserved for Organiser's advertising**

**6 – plates (2 per car) with sponsor logos** measuring 67 cm wide by 34 cm high, placed horizontally, under the door panel (1). Sponsor logos on the plates: Shell Helix, Circle K, Sportland, Saku, Carglass, Eesti Meedia, Grossi Toidukaubad

- **Driver and Co-Driver Names**

**Driver's Initials + name and co-drivers Initials + name** with their national flag of licensing country (White Helvetica 6 cm high and stroke 1 cm) **according to Art 19 of FIA RRSR**, adjacent to the competition number (rear side windows)

- **Scrutineering Sticker** - 1pc 8x6 cm Sticker affixed onto the rollcage by the Scrutineers at Scrutineering

## APPENDIX 5. CHAPTER III DRIVERS' EQUIPMENT OF APPENDIX L 2018

### Flame-Resistant Clothing / Head restraints / Helmets (FIA ISC, Appendix L, Chapter III, articles 1, 2 and 3)

#### • FLAME-RESISTANT CLOTHING

All drivers and co-drivers must wear overalls as well as gloves (optional for co-drivers), long underwear, a balaclava, socks and shoes homologated to the FIA 8856-2000 standard, (Technical List N°27). Users must ensure that garments are not too tight, as this reduces the level of protection. Embroidery sewn directly onto the overalls shall be stitched onto the outermost layer only, for better heat insulation. Backing material of badges and thread used for affixing them to the overalls must be flameproof (see Appendix 1 of the FIA 8856-2000 Standard for detailed requirements and instructions for use).

#### • FRONTAL HEAD RESTRAINT (FHR)

The use of frontal head restraints, homologated according to the FIA 8858-2010 or 8858-2002 standard is mandatory for all drivers / co-drivers. Homologated FHR systems are listed in the FIA Technical List N° 29.

#### Conditions of use

FHR systems must be worn only with FIA-approved items according to the following chart:

Helmet (2)	Tether system (tether, tether end fitting and helmet anchorage)
FIA 8860 (Technical List N° 33) FIA 8858 (Technical List N° 41)	FIA 8858 (Technical List N° 29)

(2) Mandatory wearing of helmets in each championship according to Appendix L, Chapter III, Article 1.1.

#### • HELMETS

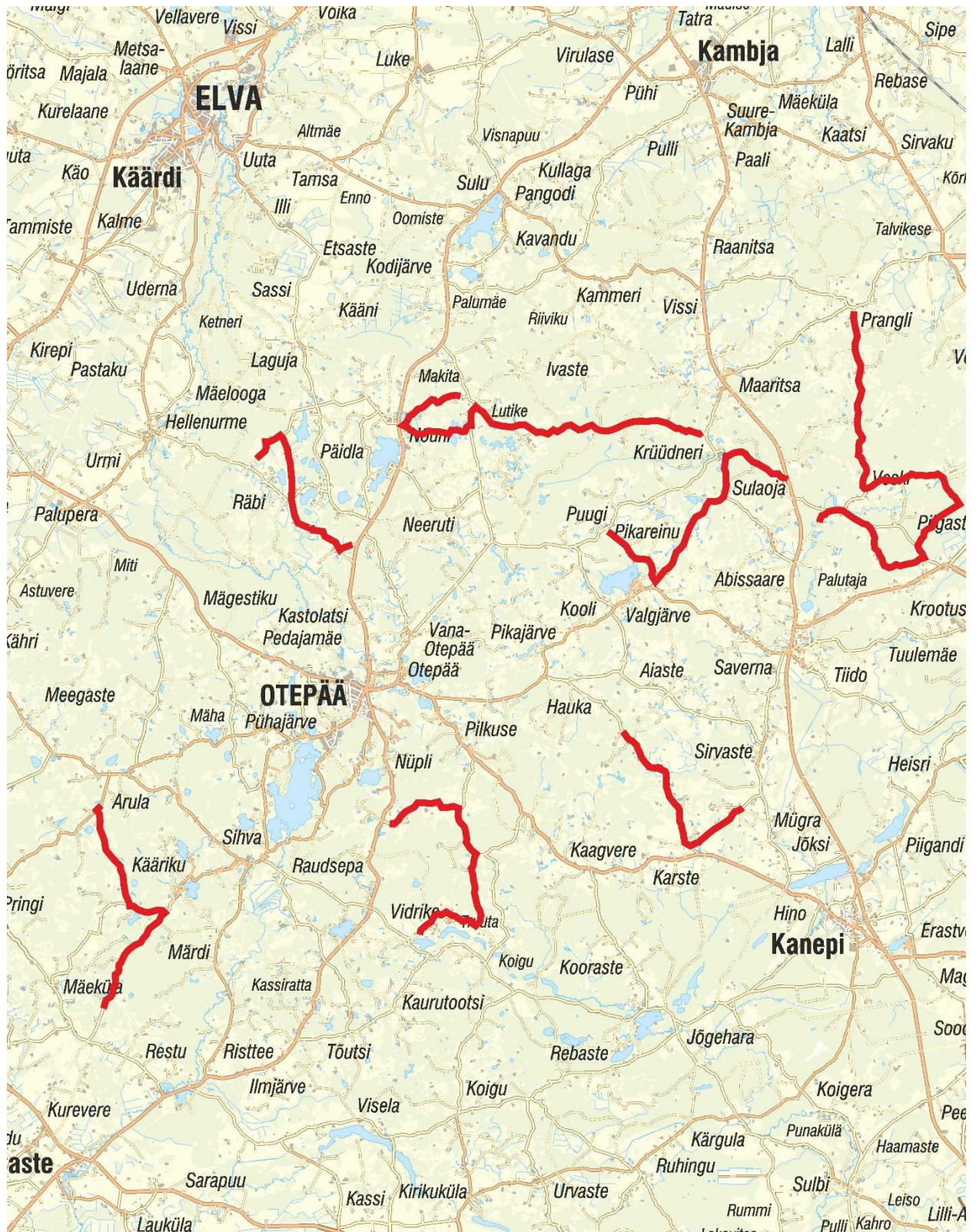
All drivers must wear crash helmets that meet one of the standards in FIA Technical List N°25, but are also compatible with FHR system (FIA 8858-2010 or 8858-2002 standard) and are thus contained in FIA Technical Lists N°33 and 41. However, it is strongly recommended, that they wear helmets meeting the FIA 8860-2004 or 8860-2010 - Advanced Helmet Test Specification (FIA Technical List N°33) standard.

Clothing and equipment will be checked at Scrutineering and at any other time during the rally.

Drivers' clothing and equipment apply to Shakedown as well.



## APPENDIX 6. MAP OF RESTRICTED ROADS



## APPENDIX 7. FUEL DECLARATION FORM

I, the undersigned, declare that we will be using (mark  the corresponding fuel)

Carless	VP racing	Panta	Other (specify)
<input type="checkbox"/>	<input type="checkbox"/>	<input type="checkbox"/>	<input type="checkbox"/>

fuel and this fuel confirms to the current  FIA /  EMV /  LRC regulations (choose one).

Competition number:

Date:

Name, Surname:

Signature: